

Garden Reminders





The posted speed limit in Marymoor Park is 20 mph. **The speed limit within the garden is 5 mph.** Please obey this for the safety of everyone, especially children.



CLEAN GREEN: This large area is for all weeds and other plant/soil debris. NO PLASTICS, WIRE FENCING, WOOD OR WOOD PLANKS, GARBAGE, METAL BUILDING MATERIALS, CHICKEN WIRE ETC. ALSO-Please note that when dumping into the clean green area, take your items to the BACK of the pile-do

not leave them in the front. It will be very clear where to dump your clean green



Please use the large dumpsters for trash.

When placing trash items in the dumpster, please do not have wood or other items protruding out. Park staff have to cut or reduce the items so they fit inside the garbage bin.



ECO BINS: These bins, which are located at the entrance to the south road along the dog park, are for compost, topsoil and mulch (leaves, wood chips etc.) Since we have a buy-in for the compost and topsoil, please do not take these materials unless you have paid for them through the website: Marymoor Garden Store



TOOLS: Tools in the Food Bank Garden area are for MCGA Work Party use. You are responsible for providing your own tools for personal use! You are welcome to borrow, but must return them to the tool stand. We are finding Food Bank tools in garden plots. PLEASE return them to the tool

shed. Food Bank tools are marked with bright colored duct tape. If you see FB tools in someone's plot, please ask them to return or retrieve them yourself and return to the tool stand. This goes for wheelbarrows as well. Kindly return wheelbarrows to the front area.



We have to remember that our gardens are smack in the midst of a **public park**. With that comes a measure of unwelcome attention. Many of us have experienced visitors helping themselves to some of our hard-earned produce. We try to support each other with attention to our friends and neighbors. We can't always know

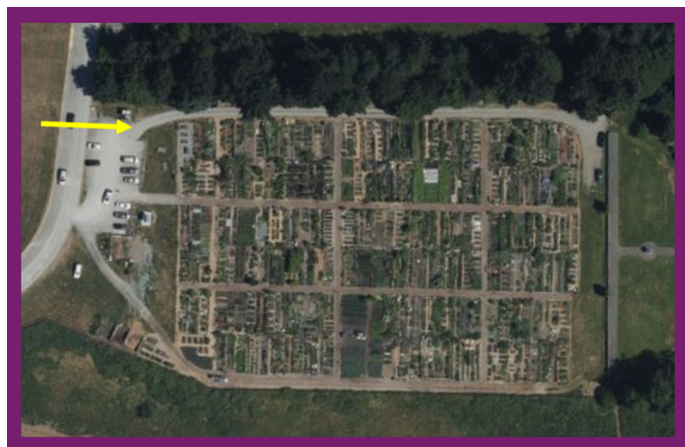
who exactly is a fellow gardener or one of their friends. If you observe a concerning incident please don't confront the "offender" directly. **What you CAN do is get out your phone and start taking pictures** from a safe distance. It's amazing how abruptly behavior changes when folks realize they're being observed. See the info below to report theft or vandalism. Documentation counts!



Please don't take other people's water hoses, wands, and attachments. Purchase these items for yourself. Watch for sale prices at Home Depot, Lowes, and take advantage of OfferUp, free stuff, & yard sales.

We love your canine companions...and...

Our dogs are precious friends and we all adore them. When they visit, please keep them on a leash and only in designated areas – along the gravel road on the north side of the garden and in the gravel parking lots. **They are not permitted inside the garden area, EVEN ON A LEASH.**



This is our MCGA sticker, issued to our gardeners. It will allow access to our garden when there are major park events, such as concerts.



This is the parking sticker issued by Marymoor Park. It is purchased from the parks and can be issued for 6 or 12 month intervals. It is handy to have.



If you do not have a parking pass, you **MUST** purchase a daily ticket from the park kiosks. Cost is \$1 and is only a day pass, it can only be used for the date it is purchased.

Pilfering: Such a bummer! QR CODE for King County Sheriff's Office To Report Theft or Vandalism:



If you experience egregious incidents, please report it to the [King County Sheriff's Office](#). Also notify the board of MCGA.

Parking Basics:

Our garden parking area can be used by ALL park visitors. Vehicles without our watercan logo sticker can also use our lots. Tickets will be issued to those who park in the garden (or anywhere within the park) who do not have a King County monthly sticker or \$1.00 parking pass. Please get one before you get a ticket!! King County is ticketing cars without the daily pass or the monthly pass. DON'T let this happen to you!

Wheelbarrow Etiquette

For new gardeners, and as a review for returning gardeners, please make sure to observe these few simple rules in the interest of safety and keeping our wheelbarrows in working order:

1. When you're done using a wheelbarrow, lean it upside down against the bulkhead in "single file." DO NOT STACK them upon each other. This results in an unbalanced mess, and can be hazardous to hands and fingers when trying to retrieve one for use!
2. NEVER leave a wheelbarrow rightside up, as it will fill up with rainwater and increase rusting of metal bins and hardware.
3. If a wheelbarrow has a flat tire or any other defect, place it upside down against the bulkhead on the north side of the main entrance (by the picnic tables) to the right of the sign. If the defect is not obvious, leave a note or email the MCGA board.

Thank you! Jon Diemer-Chief Wheelbarrow Engineer